



# BAUER

*FOR A GREEN WORLD*

## **MAGNUM SX**

**Pumps for Slurry and Viscous Liquids**



# MAGNUM SX

## Pumping and Chopping

- Can handle up to 12% solids
- Capacity of up to 300 m<sup>3</sup>/h (1320 USgpm)
- Manometric head of up to 140 m (459 ft) WC
- For pumping and chopping
- High cutting performance
- Largely insensitive to solid particles
- Efficient and economical
- Low operating costs
- Easy maintenance
- Multi-Drive – different driving options
- Self-primer (optional equipment)
- Automatic pressure regulation (optional equipment)

### Product series Magnum SX

- SX 1000 with heavy-duty gear as tractor pump
- SX 2000 with heavy-duty gear for Diesel engines
- SX 2600 with pedestal for electric drive motors

### Mounting variants

- SX 1000 on a pump trolley
- SX 1000 on a hoisting frame for three-point linkage
- SX 2000 on a trailer with Diesel engine
- SX 2000 on a mobile unit with Diesel engine
- SX 2600 on a base plate with electric drive motor

### Applications

- Agriculture:** hose lines, slurry irrigation, pump tankers, mobile and stationary transfer pumps, biogas plants
- Foodstuff industry:** slaughter houses, feces
- Environmental technology:** sewage sludge, digested sludge, fecal sludge
- Bio-energy industry**

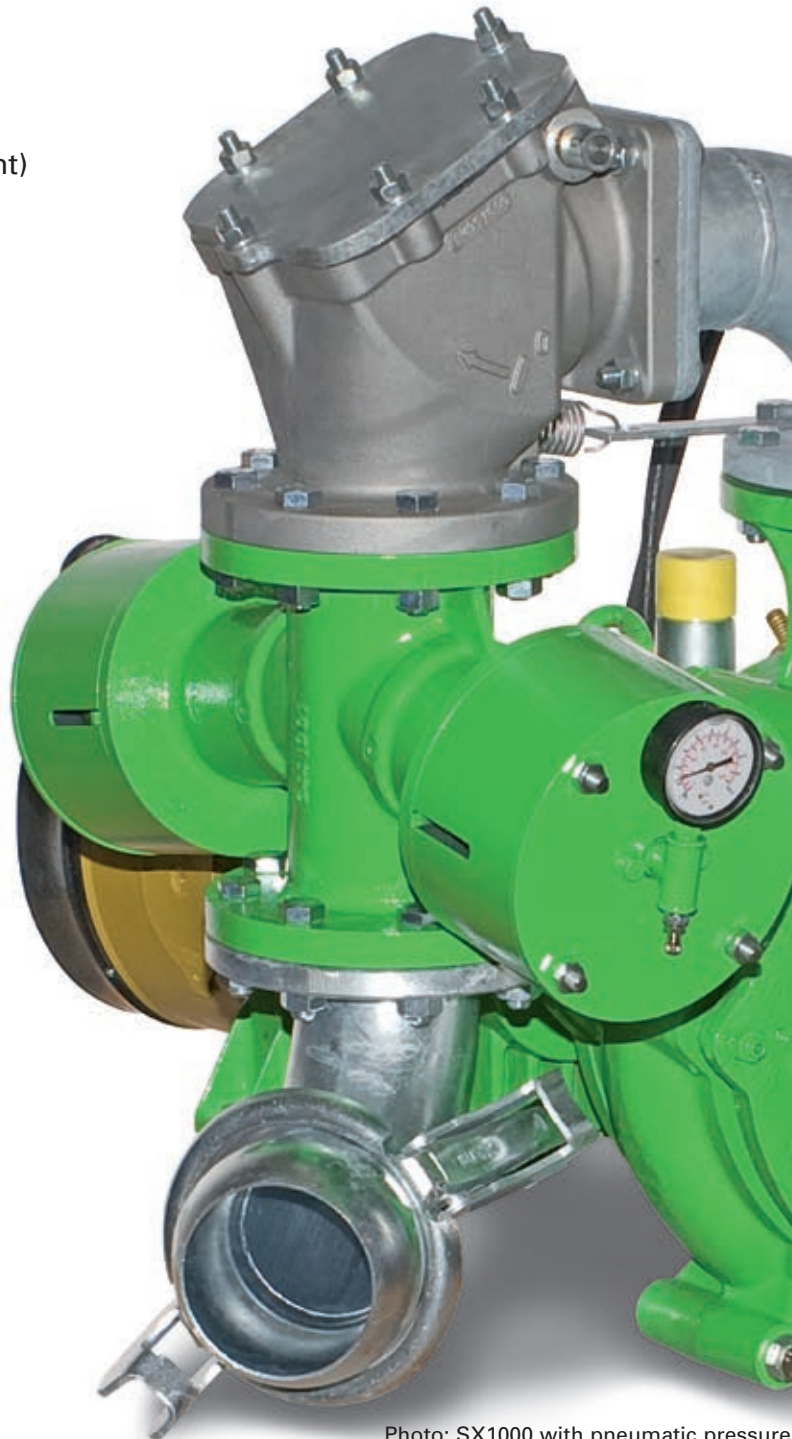
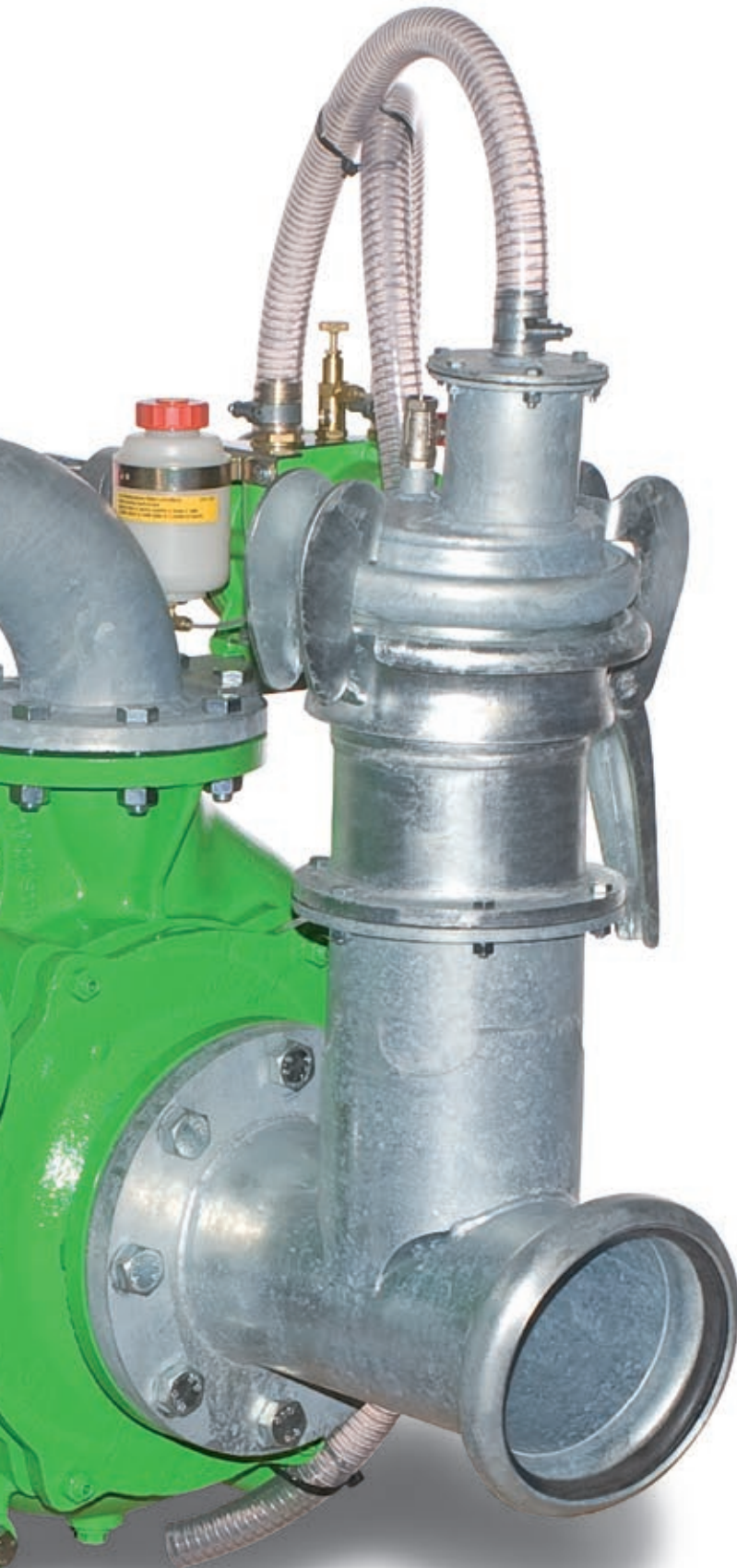


Photo: SX1000 with pneumatic pressure



## Technical features

- **Pump Housing**  
Of special design, ensures unobstructed delivery of viscous liquids
- **Cutting blades**  
Easily adjustable to maintain the ideal cutting gap, draw cut, high-grade casting
- **Suction flange**  
Ensures enormous suction capacity, avoids turbulences
- **Protection plates**  
For a long service life
- **Shaft sealing**  
Of industrial standard, double-acting mechanical seal with oil reservoir
- **Pump shaft and bearing**  
Amplly dimensioned
- **Gearbox**  
Of compact industrial design
- **Automatic pressure regulation (optional equipment)**  
For changing conditions of use



### Impeller

High-grade casting, maximum wear-resistance, ideal runner blade geometry, draw cut, best suited for liquids containing straw or grass, open design of impeller for viscous liquids, double-acting, keeps the sealing space free of solid particles



### Self-primer (optional equipment)

Mechanical, hydraulic or electro-mechanical execution

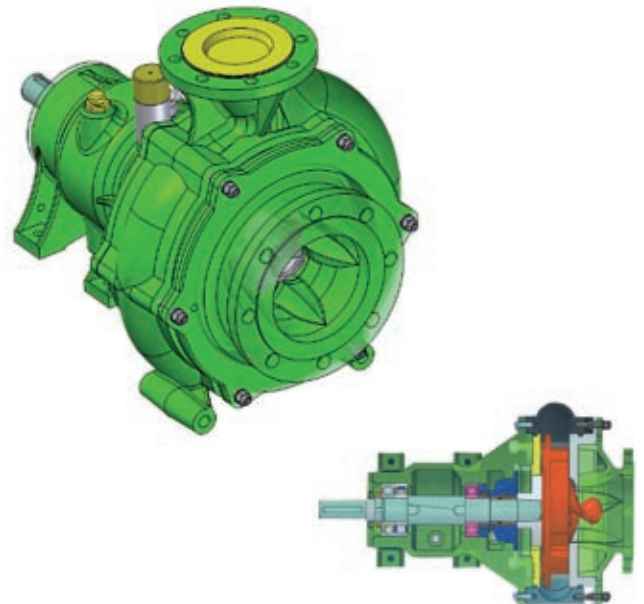
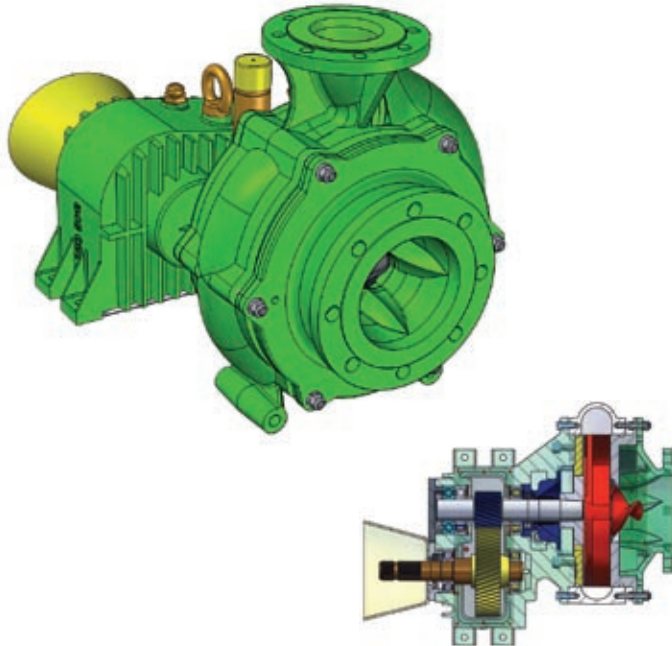


### Automatic pressure regulation (optional equipment)

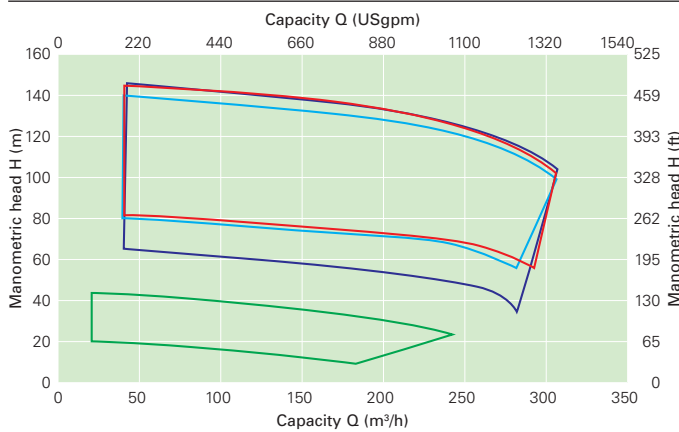
For changing conditions of use



## Technical Data



### Pressure- and capacity ranges



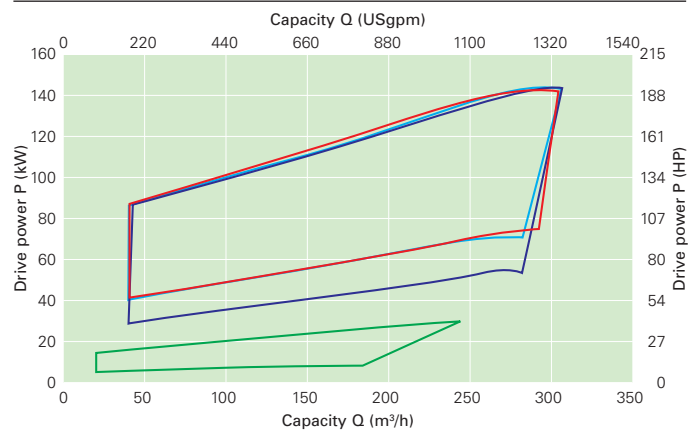
■ SX 1000   ■ SX 2000   ■ SX 2600   ■ SX 2600/1450

The performances of all SX pumps are in principle identical. They are based on the maximum nominal speed of impeller of 2600 rpm, however, with different driving- / and input speeds of up to 1000, 2000 or 2600 rpm

Pump configuration according to data sheet curves

Your dealer:

### Power- and capacity ranges



All values apply to water with an 8" intake line.

**Röhren- und Pumpenwerk BAUER GmbH**  
**8570 Voitsberg, Austria**  
**Phone +43 3142 200-0**  
**Fax +43 3142 200-320 / -340**  
**sales@bauer-at.com**  
**www.bauer-at.com**  
 A **BAUER Group** company

